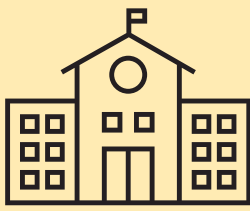


KEEP THE CHANGE

Last year, the legislature proved its commitment to early education by ensuring per-pupil pre-K funding was enough to promote quality. The legislature raised the pre-K rate from \$4,300 to \$5,000 per child, a difference of \$700 total and \$350 in state funds. Because the pandemic interrupted the session, the legislature made this change directly in the budget bill. This year, we need to finish the job to **make the rate increase permanent** and **prevent a cut to pre-K** in the middle of the pandemic. **Let's KEEP THE CHANGE!**

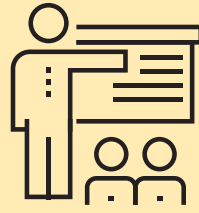
HOW \$5,000 PER PUPIL IMPACTED PRE-K IN MONROE EARLY LEARNING COLLABORATIVE (ELC)



12 Classrooms



182 Students



12 Teachers



12 Teaching Assistants

\$63,700 INCREASE IN STATE FUNDS FROM THE RATE CHANGE

How Monroe ELC Used the Funds:

1. Monroe ELC used funds to buy supplies for students so they could continue learning while at home.
2. COVID restrictions increased the need for cleaning supplies and restructuring the school environment to allow in-person learning. New funding helped cover these new expenses.
3. Funding also supports paying teachers and teaching assistants. The dollars help the ELC retain teachers, making sure students have a high-quality experience.

Monroe ELC Says:

"The pandemic has changed how our pre-K classrooms operate. Students need access to individual materials and more time is dedicated to cleaning and sanitizing. The change in the rate provided a timely and much-needed funding increase that helped us create a more personalized learning environment for our four-year-olds, whether they were in person or learning from home. Our teachers and teaching assistants have gone above and beyond to make sure our program continues. **We need the rate maintained so we can retain our teachers and teaching assistants and provide them with the supplies they need to bring their expertise to every child in our program.**"

WE KNOW THAT FOUR-YEAR-OLDS WHO ATTEND HIGH-QUALITY PRE-K:

A Enter kindergarten with **stronger** literacy, language, math, and social-emotional skills.

B **C** Are **less likely** to need special education services, **less likely** to repeat grades, and **more likely** to graduate and enroll in college.

See **stronger** employment opportunities and increased earning potential.

Are **less likely** to commit juvenile and adult crimes.

